



**Improve the landscape
of your lifestyle**

Lakeland
AWNINGS
MADE IN THE UK





Make the most of outdoor living whatever the weather with a stylish awning offering shade and shelter. Available in a variety of designs and fabrics and with a choice of mounting brackets and operations, you can choose an awning that complements your home perfectly.

Our Lakeland awnings are manufactured and supplied by a UK company based in the North-West of England, home to the beautiful and elegant Lake District. Established for over 25 years in the home improvement market, Lakeland Awnings is supported by a wealth of technical knowledge, expertise and excellent customer care.

Each Lakeland awning uses the highest quality materials and is built by highly skilled technicians using the most up to date machinery. Each awning is carefully checked, **CE** marked and packaged.

Installation is quick and easy, taking a matter of hours and will be carried out by a trained and approved installer.

With a 5 year guarantee, you can be sure that your Lakeland awning will be a lasting and valuable addition to your home providing years of protection and enjoyment.

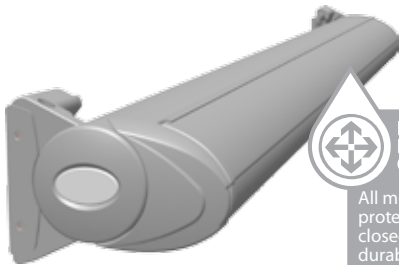


Lakeland
AWNINGS

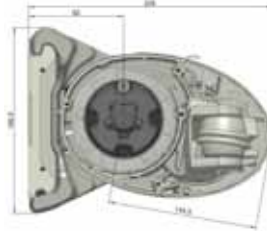
Windermere

Solid, stylish design ideal for large spaces

Retractable Awning



FULLY ENCLOSED CASSETTE
All moving parts protected when closed for ultimate durability



The **Windermere** is the flag ship of the Lakeland awning range. A compact and attractive olive style casing allows the awning to be discreet when closed, whilst still allowing an awning of up to 6m wide. The perfect awning for entertaining parties large and small.

Paint finish



Bright White RAL 9010



Sepia Brown*



Anthracite Grey*
RAL 7016

*Only Available in
2.5m & 3m Projection

Minimum Width 1910mm
Maximum Width up to 6000mm
Minimum Projection 1500mm
Maximum Projection up to 3000mm

somfy Fitted with a **Somfy® Motor** as standard.

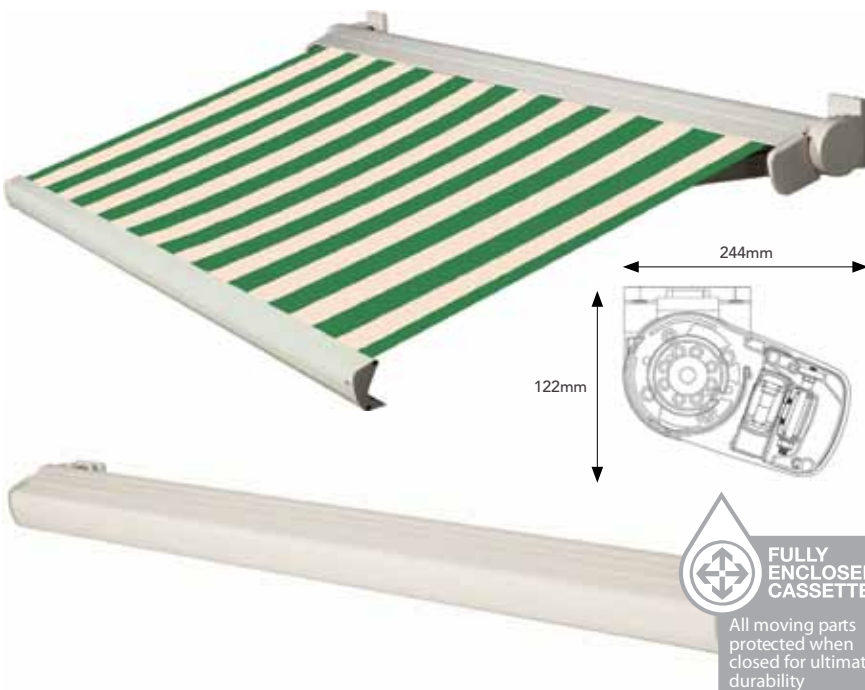




Grasmere

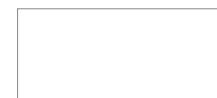
The uniquely adjustable and totally versatile awning

Retractable Awning



The **Grasmere**, is a new type of awning with a compact design and unique adjusting possibilities. Made from aluminium this awning can be fitted in almost any application and can be mounted to both walls and ceilings. The use of solid folding arms ensures maximum free movement under the awning.

Paint finish



Bright White RAL 9010

Minimum Width 1840mm

Maximum Width 6000mm

Minimum Projection 1500mm

Maximum Projection 3000mm

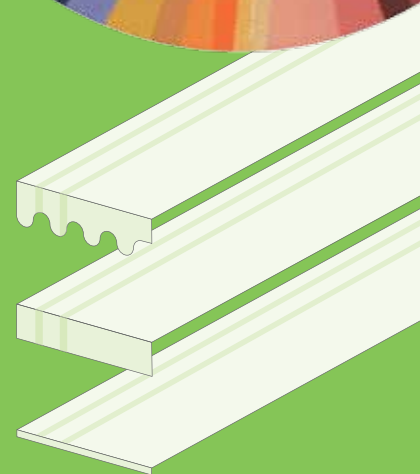
somfy. Fitted with a **Somfy® Motor** as standard.

Stunning Fabrics

New For 2011 High Performance PVC For Commercial Applications

The design of your awning can really transform the look and feel of your outside space and so it's important to take time choosing from our stunning range of fabrics.

Consider the atmosphere you wish to create, yellow and orange tones create a warming environment whereas blues and greens will set a cooling, calming tone. Think about how your awning will be used and pick a fabric to suit this. Choose from plain colours, block stripes and special designs to give your awning a personal touch and create the perfect look for your home.



UV TESTED

Our fabrics have a UV rating of at least 90% (and 99% UVB radiation), regardless of the colour so you can enjoy the sun safe in the knowledge that your Lakeland Awning offers you shade and sun protection.

We have chosen the Giovanardi and Dickson Fabric. The fabrics are woven from 100% dyed-in-the-mass acrylic fibres, which give exceptional colour fastness against strong sunlight and weather. The fabric is also treated, ensuring complete resistance to water, dirt, oil, grease, algae and mould. This all simply means that the fabric of your awning will be more resistant to fading and deterioration.



Many more fabric designs available. Please ask to see our swatch book for the full range.

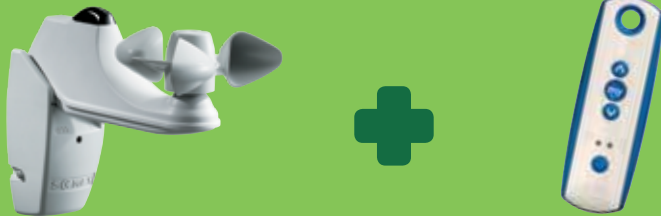
Available with wavy, straight or no valance option.



Packages

Make the most of outdoor living. Choose from our range of accessories and packages to ensure your awning works in harmony with your lifestyle.

Lakeland Family Robust and protective - a package perfect for family life



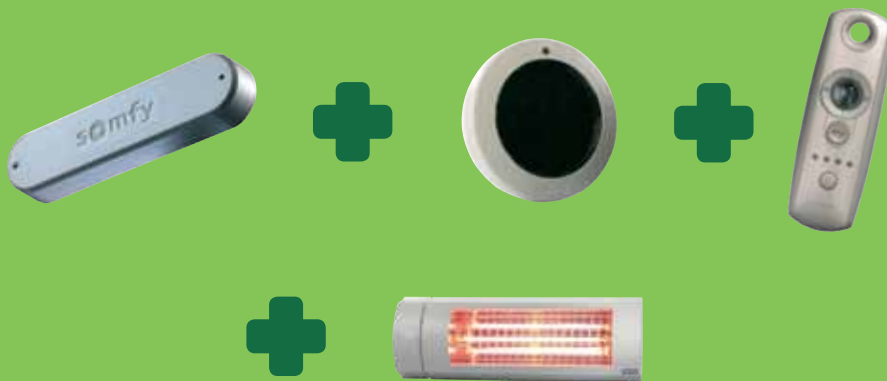
Recommended: Sun & wind sensor for ultimate protection plus a shock and water resistant hand transmitter.



Optional: Add heating to make the most of your awning when the temperature drops.



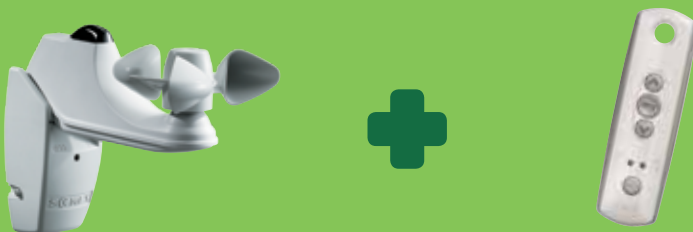
Lakeland Deluxe Ultimate style - Create the perfect space to relax and entertain



Recommended: To make the most of your awning choose motion and sun sensors for control; heating for comfort and a stylish handset for ultimate convenience.



Lakeland Home Protect soft furnishings and provide shade inside and out



Recommended: To protect furnishings and provide shading inside and outside choose a sun and wind sensor and convenient hand transmitter.



Piazza Patio Roof

Permanent protection from the elements



The body is made from extruded aluminium with your choice of durable polycarbonate or glass for the roof. The **Piazza Patio Roof** is an ideal solution offering permanent protection from the elements. With such a wide choice, you are sure to find a look perfect to suit your outside space. The **Piazza Patio Roof** is quick and easy to install, taking no more than two days in most applications.

Adding lighting to the Piazza Patio Roof ensures that you make the most of your outside space.
www.lakelandawnings.co.uk

The **Piazza Patio roof** is ideal for those looking for a permanent and stylish cover for their patio or garden allowing you to make the most of outdoor living.

Paint finish



Bright White RAL 9010



Brown RAL 8014



Green RAL 6009



Anthracite Grey
RAL 7016

Other colours available at a surcharge

.....
Minimum Width 2500mm
Maximum Width up to 7000mm
Maximum distance between vertical supports 3500mm (2600mm in Scotland)
Minimum Projection 2000mm
Maximum Projection up to 3500mm

Awnings Specifications



	WINDERMERE	GRASMERE
Min width mm*	1910	1840
Max width mm	6000	6000
Min Projection mm	1500	1500
Max Projection mm**	3000	3000
Motor	somfy.	somfy.
Colours	Bright White RAL 9010 Brown Sepia Anthracite Grey RAL 7016	Bright White RAL 9010
Guarantee	5 years	5 years



* Dependent on Projection

** Dependent on Width



Lakeland awnings are extensively tested to comply with EN standard 13561:2008. Each awning is carefully checked, CE marked and packaged. Installation is quick and easy, taking a matter of hours and will be carried out by a trained and approved installer.

Your approved Lakeland Awnings supplier:



All Lakeland Awnings are covered by a comprehensive 5 year guarantee